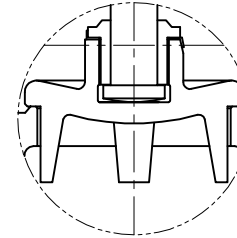
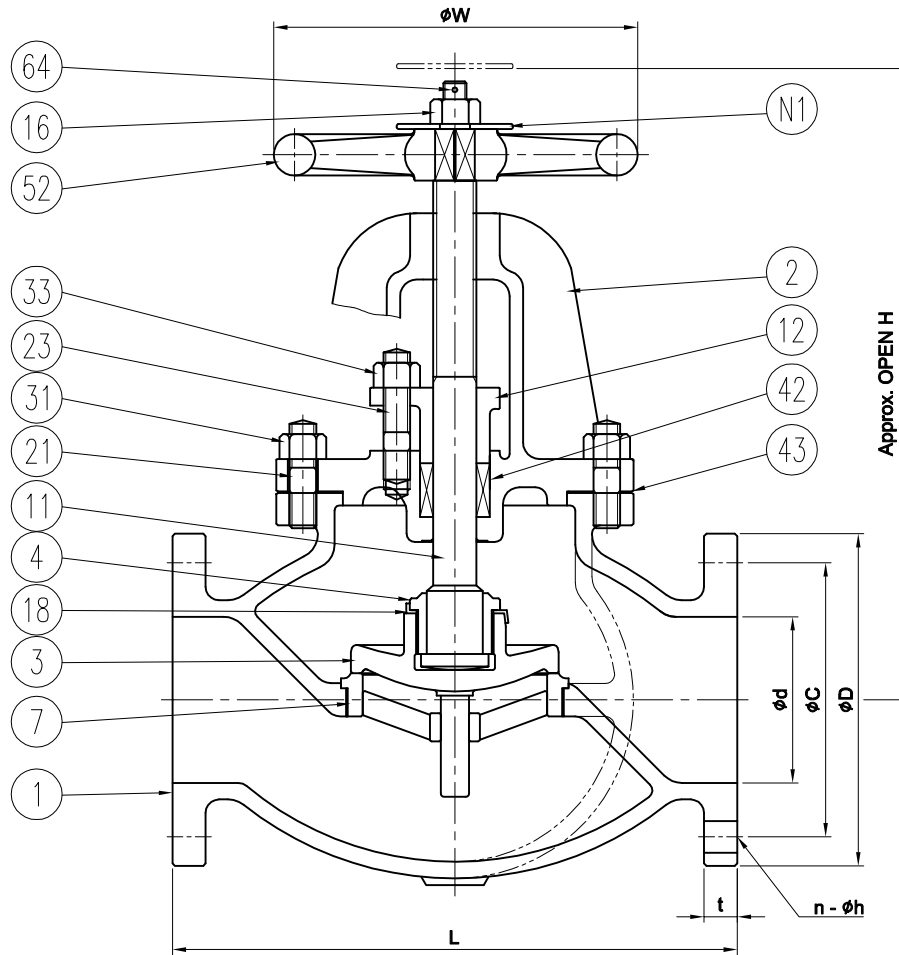


W&O Part Number 052304.xxx

TEST PRESSURE

HYDRAULIC TEST		kgf/cm <sup>2</sup>	psi
	SHELL	24.6	350
	SEAT	15.8	225



DISC FOR 4"

**NOTES**

- \* Applicable Standard
- 1. Face to Face : ASME B16.10
- 2. Flange Dimension : ASME B16.24, FF
- 3. Inspection & Test : API 598
- 4. Country of Origin : Korea

N1	NAME PLATE	AL / BRASS / 304 S.S	
64	SPLIT PIN	BRASS	
52	HAND WHEEL	A126 - CL.B	
43	GASKET	NON - ASBESTOS	
42	PACKING	PTFE	
33	GLAND NUT	B124 - C37700	
31	BONNET NUT	B124 - C37700	
23	GLAND BOLT	B124 - C37700	
21	BONNET BOLT	B124 - C37700	
18	DISC LOCK WASHER	BRASS	
16	HAND WHEEL NUT	B124 - C37700	
12	GLAND FLANGE	B62 - C83600	
11	STEM	MONEL	
7	SEAT RING	MONEL	
4	DISC NUT	B150 - C63000 <sup>△</sup>	
3	DISC	B62 - C83600 / B124 - C37700	
2	BONNET	B62 - C83600	
1	BODY	B62 - C83600	
NO.	PART NAME	MATERIAL	REMARKS

<sup>△</sup>					
<sup>△</sup>	21.04.08	MATERIAL CHANGE	S.K.CHOI	H.Y.JUNG	Y.W.PARK
<sup>△</sup>	21.02.15	ADD SPACE FIG NO.	S.K.CHOI	H.Y.JUNG	Y.W.PARK
REV. NO.	DATE	DESCRIPTION	DRW'D BY	CHK'D BY	APP'D BY

[ Unit : mm ]

NPS	BORE φd	FLANGE ASME 150Lbs FF					L	H	φW
		φD	φC	t	n	φh			
2"	50.8	150	120.7	12.7	4	19	203	280	160
2½"	63.5	180	139.7	14.2	4	19	216	310	180
3"	76.2	190	152.4	15.7	4	19	241	356	200
4"	101.6	230	190.5	17.5	8	19	292	395	224
5"	127	255	215.9	19.1	8	22	356	413	280
6"	152.4	280	241.3	20.6	8	22	406	457	315

TITLE		CAST BRONZE GLOBE VALVE			
RATING	Class 150		SIZE	See table	UNIT
DRW'D BY	CHK'D BY	APP'D BY	DATE	2021.01.14	SCALE
S.K.CHOI	H.Y.JUNG	Y.W.PARK			N / S
			TYPE	Bolted Bonnet	
			DWG. NO.	BL1A0TA - FA - GD02	
SPACE FIG NO.			#15035M		