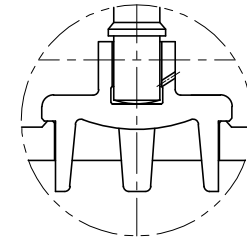
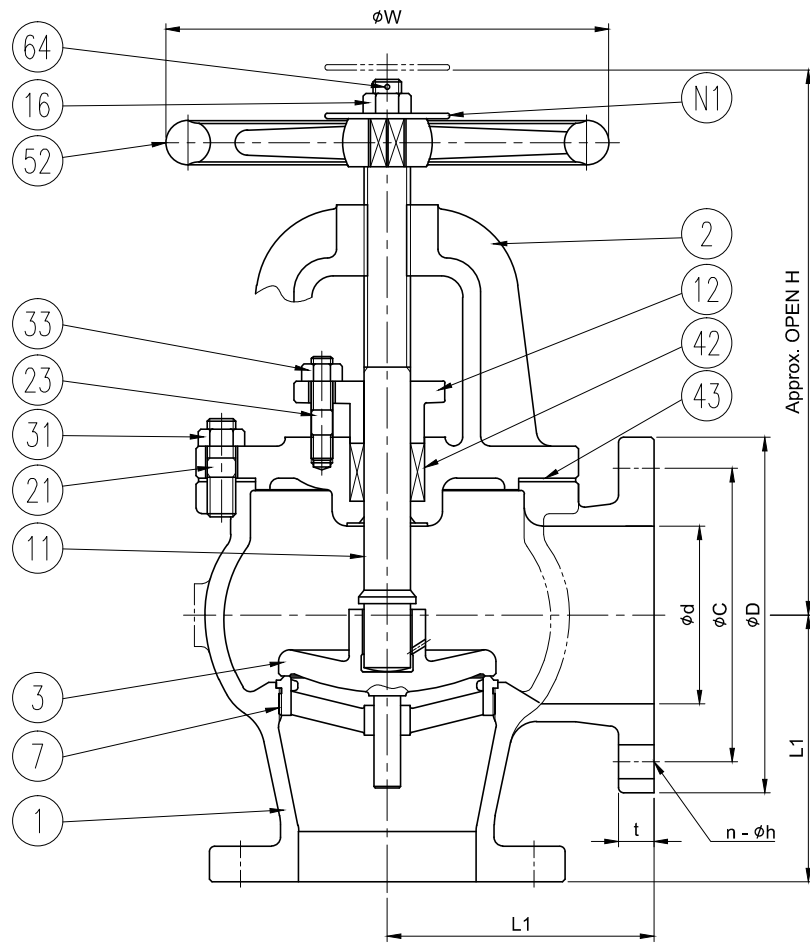
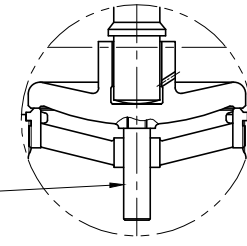


TEST PRESSURE

HYDRAULIC TEST		kgf/cm ²	psi
	SHELL	24.6	350
	SEAT	15.8	225



DISC FOR 3"



DISC FOR 10" AND OVER

NOTES

- * Applicable Standard
- 1. Face to Face : ASME B16.10
- 2. Flange Dimension : ASME B16.24, FF
- 3. Inspection & Test : API 598
- 4. Country of Origin : Korea

NO.	PART NAME	MATERIAL	REMARKS
N1	NAME PLATE	AL / BRASS / 304 S.S	
64	SPLIT PIN	BRASS	
52	HAND WHEEL	A126 - CL.B	
43	GASKET	NON - ASBESTOS	
42	PACKING	PTFE	
33	GLAND NUT	B124 - C37700	
31	BONNET NUT	B124 - C37700	
23	GLAND BOLT	B124 - C37700	
21	BONNET BOLT	B124 - C37700	
19	DISC GUIDE	B150 - C63000	10" AND OVER
16	HAND WHEEL NUT	B124 - C37700	
12	GLAND FLANGE	B62 - C83600	
11	STEM	B150 - C63000	
7	SEAT RING	B62 - C83600	
3	DISC	B62 - C83600	
2	BONNET	B62 - C83600	
1	BODY	B62 - C83600	

[Unit : mm]

NPS	BORE ϕd	FLANGE ASME 150lbs FF					L1	H	ϕW
		ϕD	ϕC	t	n	ϕh			
2"	50.8	150	120.7	12.7	4	19	102	280	180
2½"	63.5	180	139.7	14.2	4	19	108	310	200
3"	76.2	190	152.4	15.7	4	19	121	392	224
4"	101.6	230	190.5	17.5	8	19	146	356	280
5"	127	255	215.9	19.1	8	22	178	413	315
6"	152.4	280	241.3	20.6	8	22	203	457	355
8"	203.2	345	298.5	23.9	8	22	248	580	355
10"	254	405	362.0	25.4	12	25	311	650	355
12"	304.8	480	431.8	26.9	12	25	349	740	400

△					
△					
△	2020.11.03	Material changed		J.S.LIM	S.K.CHOI

REV. NO.	DATE	DESCRIPTION	DRW'D BY	CHK'D BY	APP'D BY

TITLE		CAST BRONZE ANGLE CHECK VALVE			
RATING	Class 150	SIZE	See table	UNIT	mm
DRW'D BY	CHK'D BY	APP'D BY	DATE	2018.07.09	SCALE
J.S.LIM	H.Y.JUNG	S.H.AHN			N / S
			TYPE	Bolted Bonnet	
			DWG. NO.	ANCV - BC - 150P - 2 ~ 12B	

W&S SPACE	
SPACE FIG NO.	15045 - B - SC