

DRAWING IS TYPICAL, ACTUAL QUANTITIES FOR COMPONENTS ARE SHOWN IN TABLE.

SIZE: 2"-5"  
 FIG. NO.: G15SMF-14  
 CWP: 285  
 FACING: SERRATED  
 ASME CLASS: 150

NO.	PART NAME	QTY.	MATERIAL
1	BODY	1	ASTM A216 GR WCB
2	PLATE	2	ASTM A351 GR CF8M
3	SEAT	*	BUNA-N
4	STOP PIN	1	316 SS
5	HINGE PIN	1	316 SS
6	SPRING	1	316 SS
7	STOP PIN RETAINER	2	316 SS
8	HINGE PIN RETAINER	2	316 SS
9	BODY BEARING	2	TEFLON GF
10	PLATE BEARING	2	TEFLON GF

\* SEAT IS INTEGRAL PART OF BODY

DIMENSIONAL DATA				
SIZE	øA	B	øC	WEIGHT(lbs)
2"	4 1/8	2 3/8	1 15/16	6
2 1/2"	4 7/8	2 5/8	2 11/32	10
3"	5 3/8	2 7/8	2 29/32	13
4"	6 7/8	2 7/8	3 53/64	17
5"	7 3/4	3 3/8	4 13/16	27

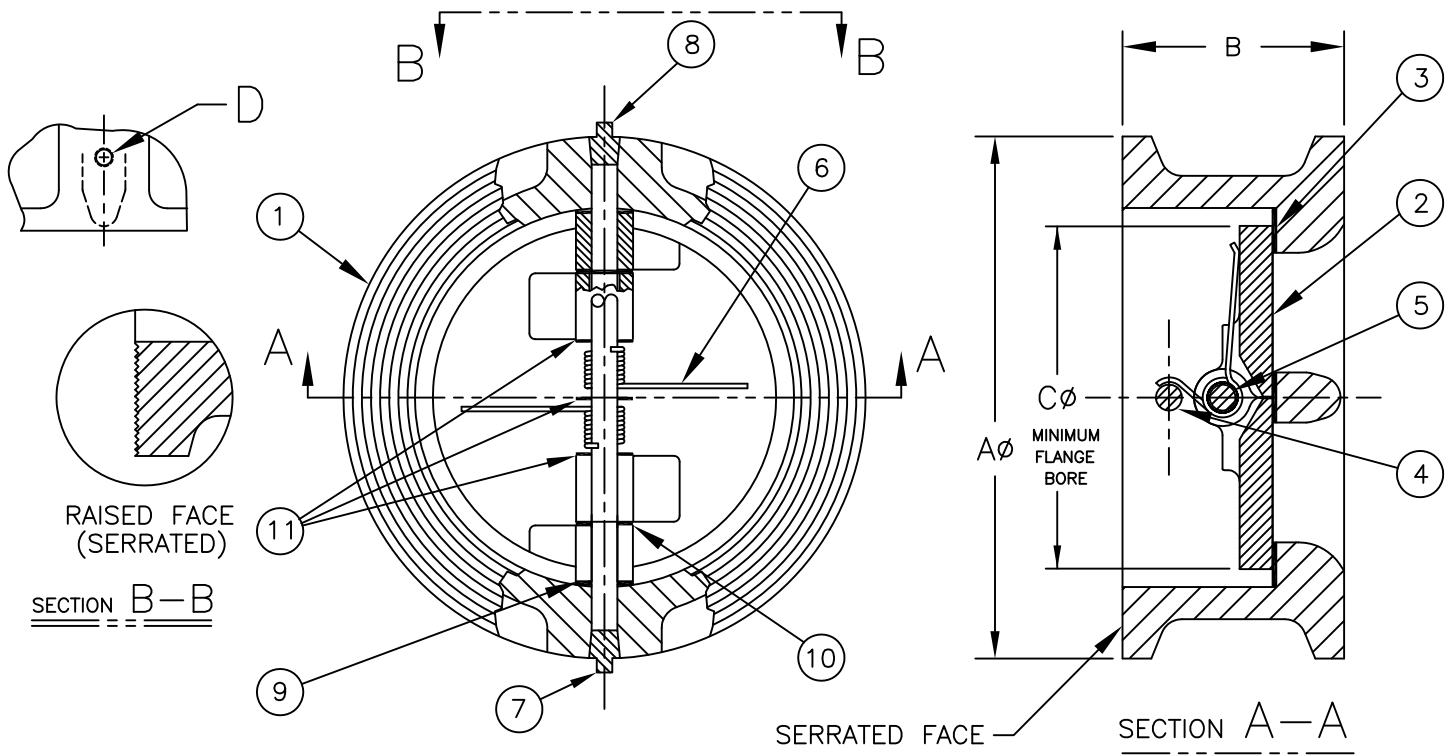
CUSTOMER:  
 CUSTOMER PO:  
 CRANE ORDER NO:  
 DATE:  
 CERTIFIED BY:

**PROPRIETARY NOTE**  
 THIS MATERIAL IS THE PROPERTY OF CRANE INCORPORATED AND IS FURNISHED FOR THE PURPOSE INDICATED. ANY AND ALL CONFIDENTIAL, PROPRIETARY, PATENT, AND OTHER RIGHTS IN THE SUBJECT MATTER IS RETAINED INCLUDING ANY EXCLUSIVE RIGHTS OF USE AND/OR MANUFACTURE AND/OR SALE. POSSESSION OF THIS MATERIAL DOES NOT CONVEY ANY PERMISSION TO REPRODUCE THIS MATERIAL, IN WHOLE OR PART, OR MANUFACTURE THE SUBJECT MATTER SHOWN THEREIN, OR USE THE CONFIDENTIAL OR PROPRIETARY INFORMATION THEREIN. SUCH PERMISSION IS TO BE GRANTED ONLY BY AN OFFICER OR OTHER AUTHORIZED AGENT OF CRANE INCORPORATED, ITS DIVISIONS OR SUBSIDIARIES.

**CRANE** Crane Energy Flow Solutions  
 Conroe Operations  
 Montgomery, Texas, USA

TITLE: CRANE DUO-CHEK II VALVE INSTALLATION DIMENSIONS AND PARTS LIST  
 STYLE "G" WAFER ASME 150 CLASS

	DWG NO.:	REV.
	2-5G15SMF-14	A
A 02/22/18	PA ECO 39940	SCALE: NTS SHEET: 1 OF 1



THIS VIEW IS ROTATED 90° TO SHOW THE ACTUAL OPERATING POSITION OF THE VALVE. THE PIN MUST BE VERTICAL FOR HORIZONTAL FLOW.

DIRECTION OF FLOW ←

DRAWING IS TYPICAL, ACTUAL QUANTITIES FOR COMPONENTS ARE SHOWN IN TABLE.

NO.	PART NAME	QTY.	MATERIAL
1	BODY	1	ASTM A216 GR WCB
2	PLATE	2	ASTM A351 GR CF8M
3	SEAT	*	BUNA-N
4	STOP PIN	1	316 SS
5	HINGE PIN	1	316 SS
6	SPRING	2	316 SS
7	STOP PIN RETAINER	2	316 SS
8	HINGE PIN RETAINER	2	316 SS
9	BODY BEARING	2	TEFLON GF
10	PLATE BEARING	2	TEFLON GF
11	SPRING BEARING	3	TEFLON VIRGIN

\* SEAT IS INTEGRAL PART OF BODY

SIZE: 6"-12"

FIG. NO.: G15SMF-14

CWP: 285

FACING: SERRATED

ASME CLASS: 150

SIZE	AØ	B	CØ	D	WEIGHT (lbs)
6"	8 3/4	3 7/8	5 49/64	1/2-13UNC-2B	35
8"	11	5	7 5/8	3/8-16UNC-2B	70
10"	13 3/8	5 3/4	9 9/16	3/8-16UNC-2B	106
12"	16 1/8	7 1/8	11 3/8	1/2-13UNC-2B	172

CUSTOMER:

CUSTOMER PO:

CRANE ORDER NO:

DATE:

CERTIFIED BY:

**PROPRIETARY NOTE**  
 THIS MATERIAL IS THE PROPERTY OF CRANE INCORPORATED AND IS FURNISHED FOR THE PURPOSE INDICATED. ANY AND ALL CONFIDENTIAL, PROPRIETARY, PATENT, AND OTHER RIGHTS IN THE SUBJECT MATTER IS RETAINED INCLUDING ANY EXCLUSIVE RIGHTS OF USE AND/OR MANUFACTURE AND/OR SALE. POSSESSION OF THIS MATERIAL DOES NOT CONVEY ANY PERMISSION TO REPRODUCE THIS MATERIAL, IN WHOLE OR PART, OR MANUFACTURE THE SUBJECT MATTER SHOWN THEREIN, OR USE THE CONFIDENTIAL OR PROPRIETARY INFORMATION THEREIN. SUCH PERMISSION IS TO BE GRANTED ONLY BY AN OFFICER OR OTHER AUTHORIZED AGENT OF CRANE INCORPORATED, ITS DIVISIONS OR SUBSIDIARIES.

**CRANE** Crane Energy Flow Solutions  
 Conroe Operations  
 Montgomery, Texas, USA

TITLE: CRANE DUO-CHEK II  
 VALVE INSTALLATION DIMENSIONS AND PARTS LIST  
 STYLE "G" WAFFER ANSI 150 CLASS

DWG NO.:	REV.
6-12G15SMF-14	A
A 02/22/18 PA ECO 39940	SCALE: NTS SHEET: SHEET