

DRAWING IS TYPICAL, ACTUAL QUANTITIES FOR COMPONENTS ARE SHOWN IN TABLE.

SIZE: 2"-5"  
 FIG. NO.: G12HMP  
 CWP: 200  
 FACING: PLAIN  
 ASME CLASS: 125

NO.	PART NAME	QTY.	MATERIAL
1	BODY	1	ASTM A126 CL B
2	PLATE	2	ASTM B148 ALLOY 952
3	SEAT	*	BUNA-N
4	STOP PIN	1	316 SS
5	HINGE PIN	1	316 SS
6	SPRING	1	316 SS
7	STOP PIN RETAINER	2	316 SS
8	HINGE PIN RETAINER	2	316 SS
9	BODY BEARING	2	TEFLON GF
10	PLATE BEARING	2	TEFLON GF

\* SEAT IS INTEGRAL PART OF BODY

DIMENSIONAL DATA				
SIZE	Aø	B	Cø	WEIGHT(lbs)
2"	4 1/8	2 1/8	2 1/16	4
2 1/2"	4 7/8	2 1/8	2 15/32	6
3"	5 3/8	2 1/4	3 1/16	7
4"	6 7/8	2 1/2	4	12
5"	7 3/4	2 3/4	5	15

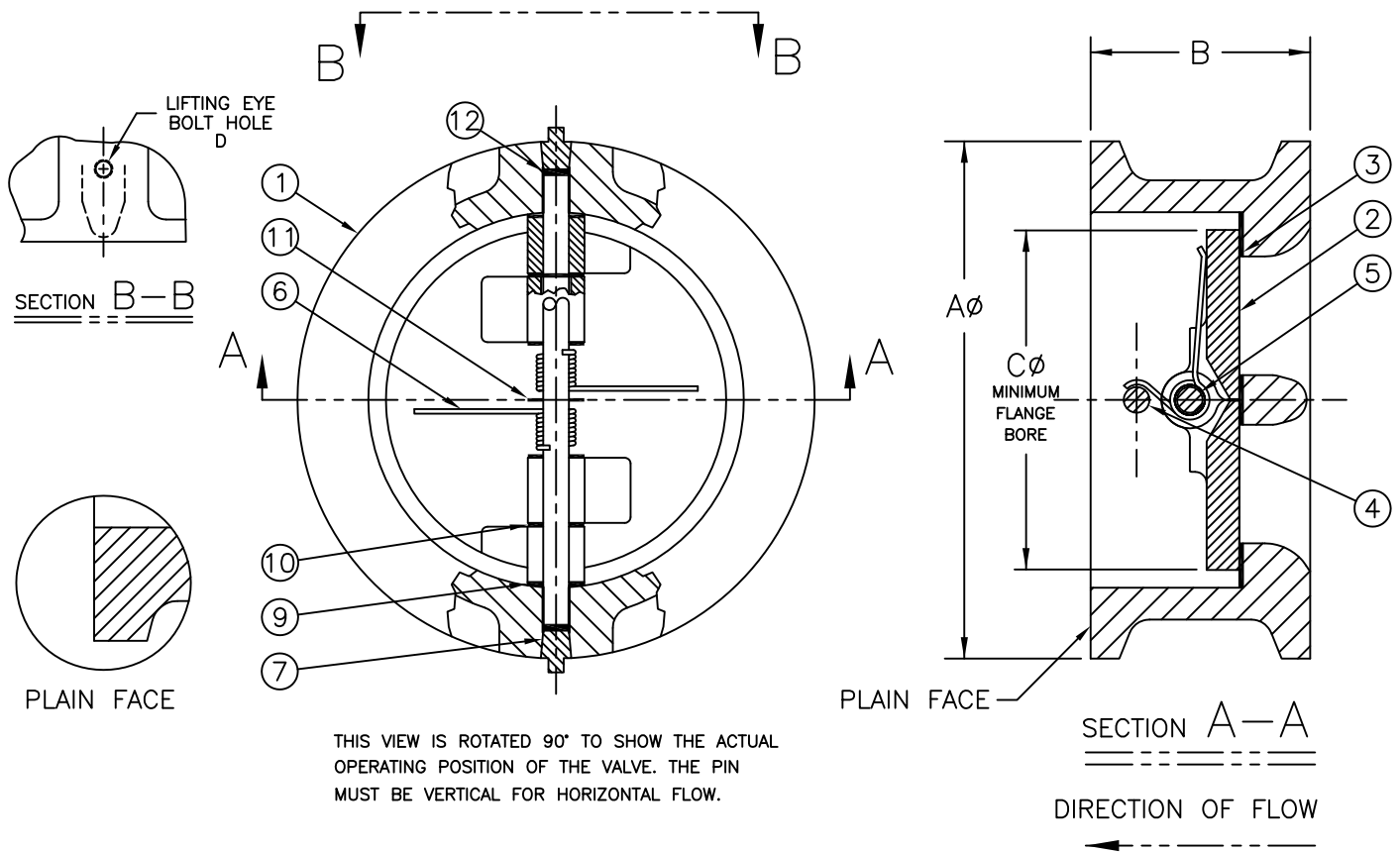
CUSTOMER:  
 CUSTOMER PO:  
 CRANE ORDER NO:  
 DATE:  
 CERTIFIED BY:

**PROPRIETARY NOTE**  
 THIS MATERIAL IS THE PROPERTY OF CRANE INCORPORATED AND IS FURNISHED FOR THE PURPOSE INDICATED. ANY AND ALL CONFIDENTIAL, PROPRIETARY, PATENT, AND OTHER RIGHTS IN THE SUBJECT MATTER IS RETAINED INCLUDING ANY EXCLUSIVE RIGHTS OF USE AND/OR MANUFACTURE AND/OR SALE. POSSESSION OF THIS MATERIAL DOES NOT CONVEY ANY PERMISSION TO REPRODUCE THIS MATERIAL, IN WHOLE OR PART, OR MANUFACTURE THE SUBJECT MATTER SHOWN THEREIN, OR USE THE CONFIDENTIAL OR PROPRIETARY INFORMATION THEREIN. SUCH PERMISSION IS TO BE GRANTED ONLY BY AN OFFICER OR OTHER AUTHORIZED AGENT OF CRANE INCORPORATED, ITS DIVISIONS OR SUBSIDIARIES.

**CRANE** Crane Energy Flow Solutions  
 Conroe Operations  
 Montgomery, Texas, USA

TITLE: CRANE DUO-CHEK II  
 VALVE INSTALLATION DIMENSIONS AND PARTS LIST  
 STYLE "G" WAFER CHECK-ASTM 125 CLASS

DWG NO.:		REV.
2-5G12HMP		A
A 02/22/18	PA ECO 39941	SCALE: NTS SHEET: 1 OF 1



DRAWING IS TYPICAL, ACTUAL QUANTITIES FOR COMPONENTS ARE SHOWN IN TABLE.

SIZE: 6"-12"

FIG. NO.: G12HMP

CWP: 200

FACING: PLAIN

ASME CLASS: 125

NO.	PART NAME	QTY.	MATERIAL
1	BODY	1	ASTM A126 CL B
2	PLATE	2	ASTM B148 ALLOY 952
3	SEAT	*	BUNA-N
4	STOP PIN	1	316 SS
5	HINGE PIN	1	316 SS
6	SPRING	2	316 SS
7	STOP PIN RETAINER	2	316 SS
8	HINGE PIN RETAINER	2	316 SS
9	BODY BEARING	2	TEFLON GF
10	PLATE BEARING	2	TEFLON GF
11	SPRING BEARING	3	TEFLON VIRGIN
12	PIN STABILIZERS	4	BUNA-N

\* SEAT IS INTEGRAL PART OF BODY

DIMENSIONAL DATA						
SIZE	Aø	B	Cø	D	WEIGHT(lbs)	
6"	8 3/4	3	6 1/16	-	20	
8"	11	3 3/4	8	3/8-16UNC-2B	40	
10"	13 3/8	4 1/4	10	3/8-16UNC-2B	65	
12"	16 1/8	5 5/8	11 15/16	1/2-13UNC-2B	110	

CUSTOMER:

CUSTOMER PO:

CRANE ORDER NO:

DATE:

CERTIFIED BY:

**PROPRIETARY NOTE**  
 THIS MATERIAL IS THE PROPERTY OF CRANE INCORPORATED AND IS FURNISHED FOR THE PURPOSE INDICATED. ANY AND ALL CONFIDENTIAL, PROPRIETARY, PATENT, AND OTHER RIGHTS IN THE SUBJECT MATTER IS RETAINED INCLUDING ANY EXCLUSIVE RIGHTS OF USE AND/OR MANUFACTURE AND/OR SALE. POSSESSION OF THIS MATERIAL DOES NOT CONVEY ANY PERMISSION TO REPRODUCE THIS MATERIAL, IN WHOLE OR PART, OR MANUFACTURE THE SUBJECT MATTER SHOWN THEREIN, OR USE THE CONFIDENTIAL OR PROPRIETARY INFORMATION THEREIN. SUCH PERMISSION IS TO BE GRANTED ONLY BY AN OFFICER OR OTHER AUTHORIZED AGENT OF CRANE INCORPORATED, ITS DIVISIONS OR SUBSIDIARIES.

**CRANE**

Crane Energy Flow Solutions  
 Conroe Operations  
 Montgomery, Texas, USA

TITLE: CRANE DUO-CHEK II  
 VALVE INSTALLATION DIMENSIONS AND PARTS LIST  
 STYLE "G" WAFER CHECK-ASME 125 CLASS

DWG NO.:		REV.
6-12G12HMP		A
A	02/22/18 PA ECO 39941	SCALE: NTS SHEET: 1 OF 1

CAD DRAWING FILE:  
 6-12G12HMP\_ECO39941.dwg