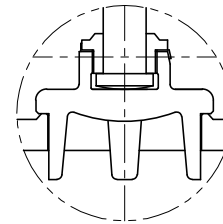
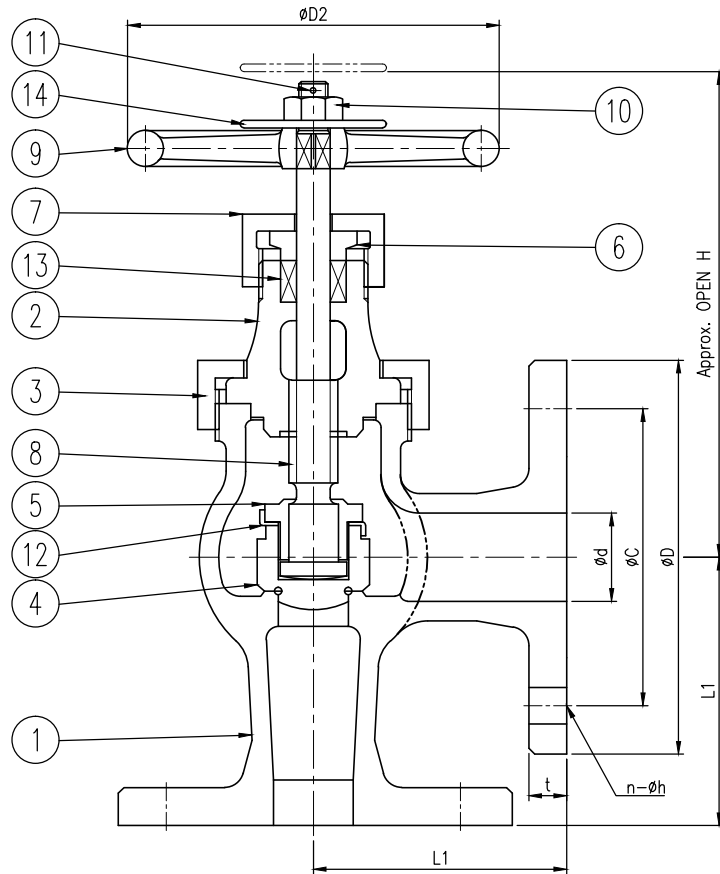


TEST PRESSURE

HYDRAULIC TEST		kgf/cm <sup>2</sup>	psi
	SHELL	24.6	350
	SEAT	15.8	225



DISC FOR 3"

NOTES

- \* Applicable Standard
- 1. Face to Face : Manufacturer's Standard
- 2. Flange Dimension : ASME B16.24
- 3. Inspection & Test : API 598

14	NAME PLATE	AL/BRASS/304 S.S	
13	PACKING	PTFE	
12	DISC LOCK WASHER	BRASS	
11	SPLIT PIN	BRASS	
10	HAND WHEEL NUT	B124-C37700	
9	HAND WHEEL	A126-CL.B	
8	STEM	B124-C37700	
7	GLAND NUT	B124-C37700	
6	PACKING GLAND	B124-C37700	
5	DISC NUT	B124-C37700	
4	DISC	B62-C83600	
3	UNION NUT	B62-C83600	
2	BONNET	B62-C83600	
1	BODY	B62-C83600	
NO.	PART NAME	MATERIAL	REMARKS

△	-	-			
△	-	-			
△	-	-			
REV. NO.	DATE	DESCRIPTION	DRW'D BY	CHK'D BY	APP'D BY

TITLE		CAST BRONZE ANGLE VALVE			
RATING	Class 150	SIZE	See table	UNIT	mm
DRW'D BY	CHK'D BY	APP'D BY	DATE	2018.07.09	SCALE N/S
J.S.LIM	S.H.AHN	D.H.KIM	TYPE	Union Bonnet	
			DWG. NO.	ANV-BC-150P-0.5~3B	

[ Unit : mm ]

NPS	BORE Ød	FLANGE ASME 150lbs FF					L1	H	ØD2
		ØD	ØC	t	n	Øh			
½"	12.7	90	60.5	7.9	4	16	55	120	80
¾"	19.1	100	69.9	8.6	4	16	60	130	80
1"	25.4	110	79.4	9.7	4	16	67	155	100
1-¼"	31.8	115	88.9	10.4	4	16	73	157	100
1-½"	38.1	125	98.4	11.2	4	16	81	190	125
2"	50.8	150	120.7	12.7	4	19	95.3	233	140
2-½"	63.5	180	139.7	14.2	4	19	109.5	260	160
3"	76.2	190	152.4	15.7	4	19	117.5	280	180

SPACE