

BAR STOCK NEEDLE VALVES

SIZES: 1/8" to 1"

200 to 10,000 PSI
CARBON STEEL, STAINLESS, OR BRONZE
THREADED OR SOCKETWELD

Bar stock needle valve are designed for orifice meters, gauges, by-passes, instrument lines, and many other small, high pressure gas and liquid lines requiring fine regulation of flow and compact shape.

Bar stock needle valves come in straight globe or angle patterns. End connections are available with different end combinations, including male by female.

Pressure ratings vary by manufacturer.

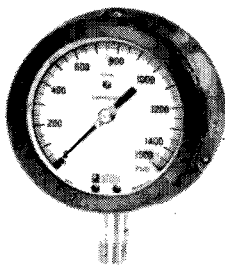
GAGE-TYPE NEEDLE VALVES

SIZES: 1/8" OD to 3/4" OD and 6mm to 12mm OD

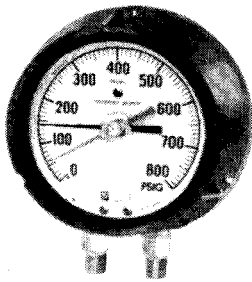
Available in bronze, stainless steel, and monel. Compact body design, easy to install in space-restricted locations. Made in OD sizes with compression ends, also available with flare ends and male or female, straight or tapered threads. Angle pattern and multiport cross type also available.

PRESSURE GAUGES & THERMOMETERS

Back and bottom connected and adjustable types.
Specify details and scale range.



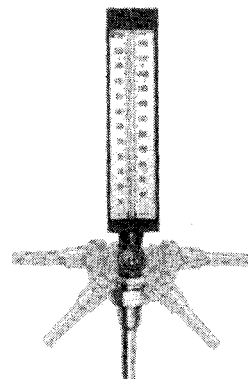
Simplex
Gauge



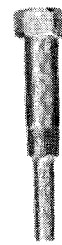
Duplex
Gauge &
Differential
Gauge



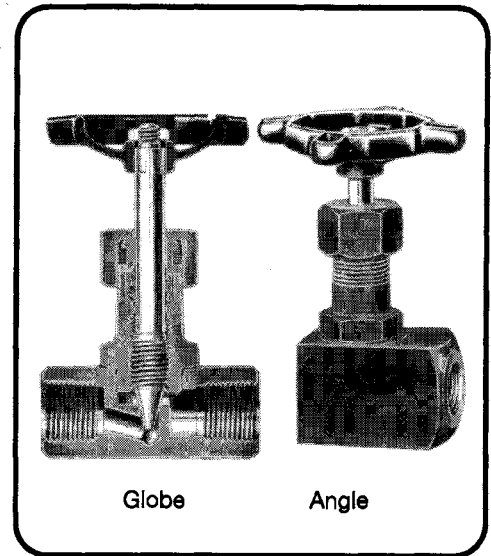
Bi-Metal
Thermometer



Adjustable
Mercury



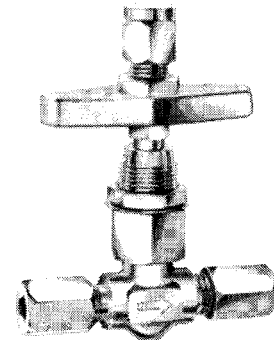
Thermowells
All materials



Globe

Angle

	Globe	Angle
Steel Threaded	533601	534601
Steel Socketweld	533631	534631
Stainless Threaded	533701	534701
Stainless Socketweld	533731	534731
Bronze Threaded	533501	534501



Gage Valves

Stainless	-	533101
Monel	-	533201
Bronze	-	533301