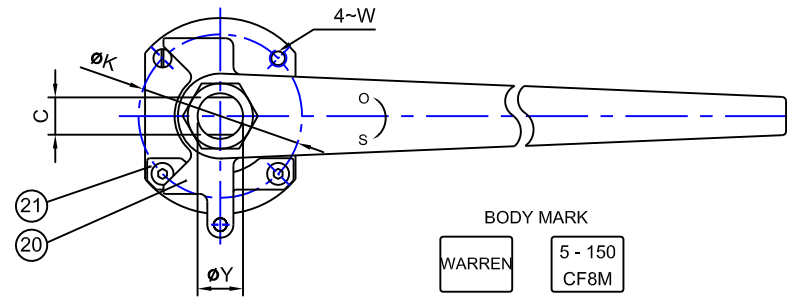
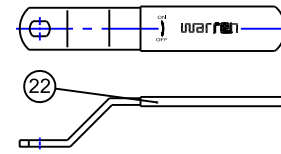


Fig No:

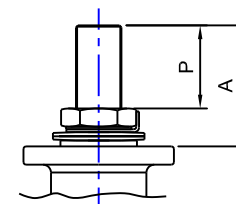
WARREN-6156



BODY MARK
 WARREN 5 - 150
 CF8M

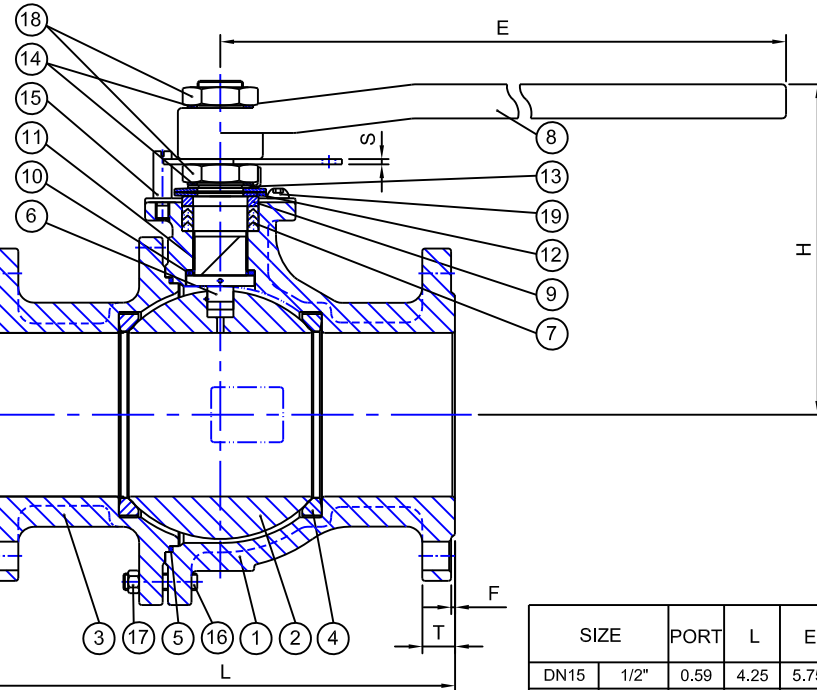


SS304 HANDLE For 1/2"-2-1/2"



MATERIAL LIST

NO.	PART NAME	MATERIAL		Q'TY
		STAINLESS STEEL		
1	BODY	ASTM A351-CF8M		1
2	BALL	ASTM A351-CF8M		1
3	CAP	ASTM A351-CF8M		1
4	SEAT	RPTFE		2
5	GASKET	PTFE		1
6	STEM	ASTM A276-316		1
7	STEM PACKING	PTFE		1SET
8	HANDLE	AISI SS304 (1/2"-2-1/2") ASTM A536-65-45-12 (3"-6")		1
9	SLEEVE	AISI SS304		1
10	THRUST WASHER	PTFE		1
11	STEM BEARING	PTFE		1
12	DISK SPRING WASHER	AISI SS301		2
13	LOCK WASHER	AISI SS304		1
14	WASHER	AISI SS304		2
15	SET SCREW	AISI SS304		1
16	STUD	AISI SS304		4-8
17	NUT	AISI SS304		4-8
18	THIN NUT	AISI SS304		2
19	SCREW	AISI SS304		2
20	TRAVEL STOPPER (1)	AISI SS304		1
21	TRAVEL STOPPER (2)	AISI SS304		1
22	HANDLE COVER	PLASTIC		1



DIMENSIONS

SIZE	PORT	L	E	H	G	J	I	T	F	C	Y	W	P	A	K	S	M-N	CV(GPM)	TORQUE(LBF-IN)	WEIGHT(LBS)	ISO5211	unit:inch	
DN15	1/2"	0.59	4.25	5.75	3.21	3.50	2.38	1.38	0.46	0.08	0.35	0.47	1/4-20UNC	0.63	0.93	1.65	0.10	4-ø0.63	42	57.53	4.72	F04	
DN20	3/4"	0.79	4.61	5.75	3.31	3.86	2.76	1.69	0.46	0.08	0.35	0.47	1/4-20UNC	0.63	0.93	1.65	0.10	4-ø0.63	68	79.66	4.98	F04	
DN25	1"	1.00	5.00	5.75	3.71	4.25	3.13	2.01	0.47	0.08	0.47	0.63	1/4-20UNC	0.64	1.09	1.97	0.10	4-ø0.63	109	106.21	7.58	F05	
DN40	1-1/2"	1.50	6.50	7.95	4.86	5.00	3.88	2.87	0.60	0.08	0.51	0.71	5/16-18UNC	0.84	1.56	2.76	0.10	4-ø0.63	268	168.17	15.30	F07	
DN50	2"	1.97	7.01	7.95	5.19	5.98	4.74	3.62	0.64	0.08	0.51	0.71	5/16-18UNC	0.80	1.56	2.76	0.10	4-ø0.75	501	265.53	21.12	F07	
DN65	2-1/2"	2.48	7.48	7.95	6.08	7.01	5.49	4.13	0.71	0.08	0.51	0.71	5/16-18UNC	0.75	1.51	2.76	0.10	4-ø0.75	804	672.68	32.23	F07	
DN80	3"	3.15	7.99	12.74	7.18	7.50	6.00	5.00	0.77	0.08	0.71	0.95	3/8-16UNC	1.69	2.61	4.02	0.20	4-ø0.75	1277	991.31	43.92	F10	
DN100	4"	3.86	9.02	12.74	8.06	9.02	7.50	6.18	0.96	0.08	0.71	0.95	3/8-16UNC	1.69	2.61	4.02	0.20	8-ø0.75	1973	1345.35	68.70	F10	
DN125	5"	4.92	14.02	29.63	9.96	10.00	8.50	7.32	0.96	0.08	1.12	1.38	1/2-13UNC	2.59	3.68	4.92	0.24	8-ø0.87	3304	2026.88	111.99	F12	
DN150	6"	5.98	15.51	29.63	10.70	10.98	9.51	8.50	1.02	0.08	1.12	1.38	1/2-13UNC	2.59	3.68	4.92	0.24	8-ø0.87	4923	3611.21	147.71	F12	

STEAM RATING: 150 PSI WSP
 TEST PRESSURE: Shell (by Water), 425 Psig
 Seat (by Air), 80 Psig
 APPLICABLE STANDARDS: Shell Wall Thickness:ANSI B16.34
 Face to Face:ANSI B16.10
 End Flanges:ANSI B16.5
 Inspection Per API 598
 ISO 5211 MOUNTING PAD



APPROVED BY.	CHECK BY.	DRAWN BY.	DRAWINGNO.	MATERIAL	UNIT	DESCRIPTION	
SIGN	CHANG	PETER CHEN	Ann	WARREN-6156	ASTM A351-CF8M	TWO PIECES BALL VALVES, FLANGE END, FULL BORE, ANSI CLASS 150	
DATE	05/23/2012	05/23/2012	05/23/2012	REVISION	01	SCALE	FREE