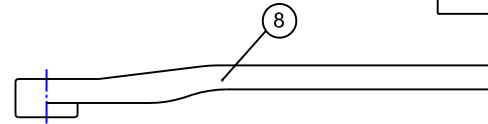
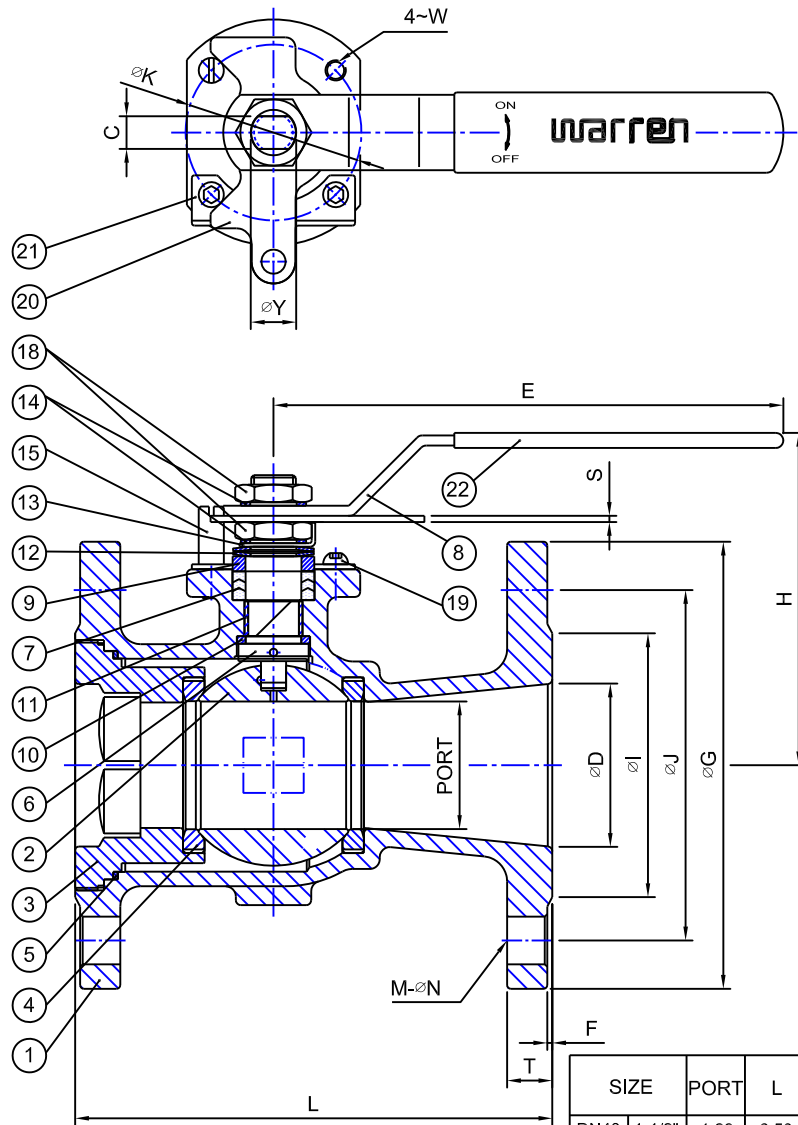
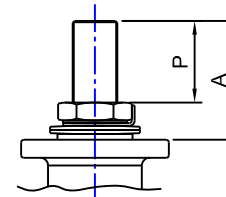


Fig No:

WARREN-5156



FCD45 HANDLE For 3"-6"



BODY MARK



STEAM RATING:
150 PSI WSP

TEST PRESSURE:
Shell (by Water), 425 Psig
Seat (by Air), 80 Psig

APPLICABLE STANDARDS:
Shell Wall Thickness:ANSI B16.34
Face to Face:ANSI B16.10
End Flanges:ANSI B16.5
Inspection Per API 598
ISO 5211 MOUNTING PAD

MATERIAL LIST

NO.	PART NAME	MATERIAL	Q'TY
		STAINLESS STEEL	
1	BODY	ASTM A351-CF8M	1
2	BALL	ASTM A351-CF8M	1
3	CAP	ASTM A351-CF8M	1
4	SEAT	RPTFE	2
5	GASKET	PTFE	1
6	STEM	ASTM A276-316	1
7	STEM PACKING	PTFE	1SET
8	HANDLE	AISI SS304 (1/2"-2-1/2") ASTM A536-65-45-12 (3"-6")	1
9	SLEEVE	AISI SS304	1
10	THRUST WASHER	PTFE	1
11	STEM BEARING	PTFE	1
12	DISK SPRING WASHER	AISI SS301	2
13	LOCK WASHER	AISI SS304	1
14	WASHER	AISI SS304	2
15	SET SCREW	AISI SS304	1
18	THIN NUT	AISI SS304	2
19	SCREW	AISI SS304	2
20	TRAVEL STOPPER (1)	AISI SS304	1
21	TRAVEL STOPPER (2)	AISI SS304	1
22	HANDLE COVER	PLASTIC	1

DIMENSIONS

SIZE	PORT	L	E	H	G	J	I	D	T	F	C	Y	W	P	A	K	S	M-N	CV(GPM)	TORQUE(LBF-IN)	WEIGHT(LBS)	ISO5211	
DN40	1-1/2"	1.28	6.50	5.75	3.93	5.00	3.88	2.87	1.50	0.58	0.08	0.47	0.63	1/4-20UNC	0.62	1.04	1.97	1.97	4-Ø0.63	151	150.47	11.29	F05
DN50	2"	1.50	7.01	7.95	4.90	5.98	4.74	3.82	1.81	0.65	0.08	0.51	0.71	5/16-18UNC	0.80	1.56	2.76	2.76	4-Ø0.75	225	194.72	15.79	F07
DN65	2-1/2"	1.97	7.48	7.95	5.19	7.01	5.49	4.13	2.56	0.71	0.08	0.51	0.71	5/16-18UNC	0.80	1.56	2.76	2.76	4-Ø0.75	412	433.7	21.74	F07
DN80	3"	2.28	7.99	12.74	6.57	7.48	6.00	5.00	3.07	0.77	0.08	0.71	0.94	3/8-16UNC	1.69	2.61	4.02	0.20	4-Ø0.75	535	867.4	33.55	F10
DN100	4"	3.15	9.02	12.74	7.48	9.02	7.50	6.42	3.74	0.96	0.08	0.71	0.94	3/8-16UNC	1.69	2.61	4.02	0.20	8-Ø0.75	1051	1088.67	52.69	F10
DN150	6"	4.53	10.51	29.63	9.67	10.98	9.51	8.50	5.91	1.00	0.08	1.12	1.38	1/2-13UNC	2.59	3.68	4.92	0.24	8-Ø0.87	2273	1425.01	101.32	F12

unit:inch



	APPROVED BY.	CHECK BY.	DRAWN BY.	DRAWINGNO.	MATERIAL	UNIT	DESCRIPTION
SIGN	CHANG	PETER CHEN	Ann	WARREN-5156	ASTM A351-CF8M	INCH	ONE PIECE BALL VALVES FLANGE END, REDUCED BORE, ANSI CLASS 150
DATE	05/23/2012	05/23/2012	05/23/2012	REVISION	01	SCALE	