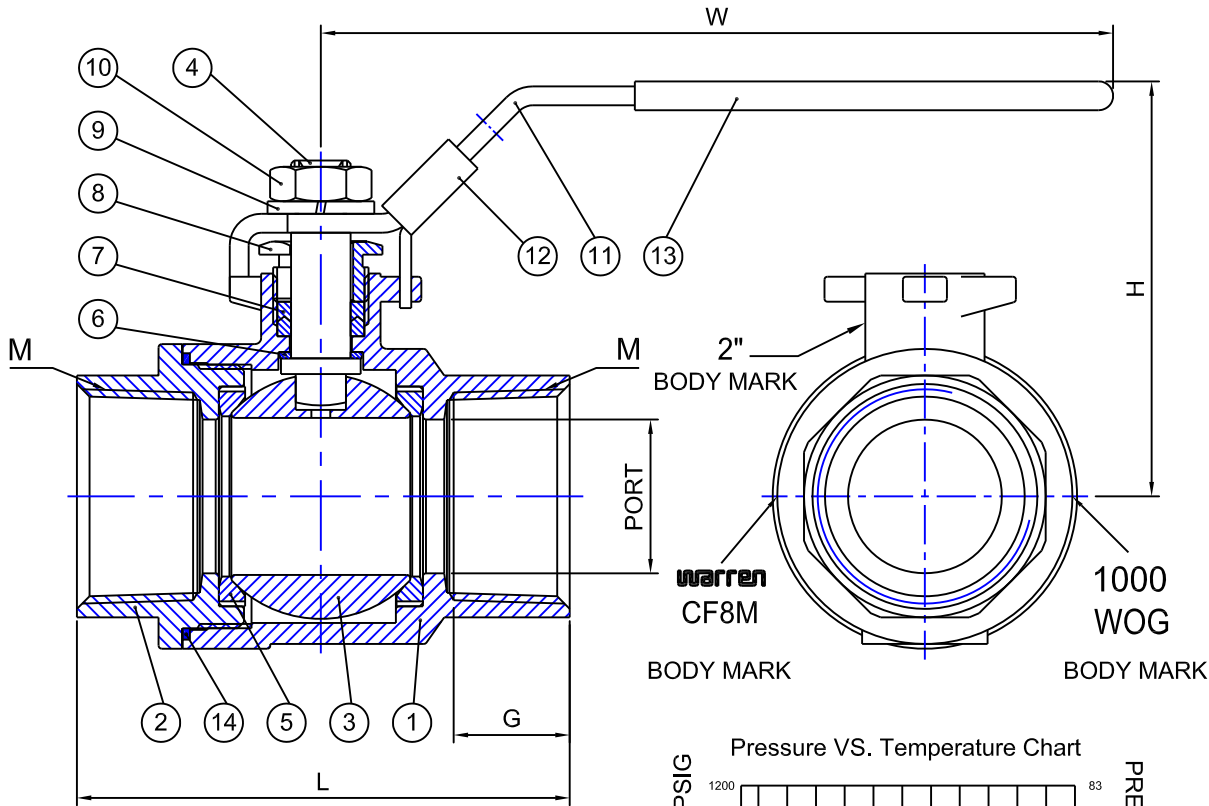


Fig No:

WARREN-1022C

MATERIAL LIST

NO.	PART NAME	MATERIAL	Q'TY
		STAINLESS STEEL	
1	BODY	ASTM A351-CF8M	1
2	CAP	ASTM A351-CF8M	1
3	BALL	ASTM A351-CF8M	1
4	STEM	ASTM A276-316	1
5	SEAT	RPTFE	2
6	THRUST WASHER	PTFE	1
7	STEM PACKING	PTFE	1SET
8	GLAND NUT	AISI SS304	1
9	SPRING WASHER	AISI SS304	1
10	NUT	AISI SS304	1
11	HANDLE	AISI SS304	1
12	LOCKING PAD	AISI SS304	1
13	HANDLE COVER	PLASTIC	1
14	GASKET	PTFE	1



STEAM RATING:  
150 PSI WSP

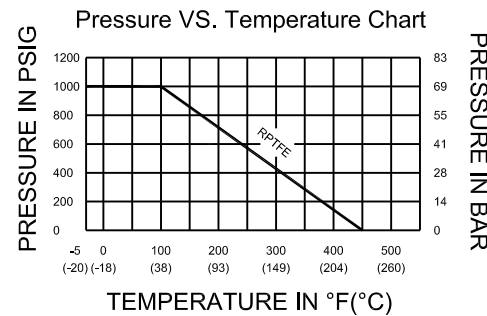
TEST PRESSURE:  
Shell (by Water), 1500 Psig  
Seat (by Air), 80 Psig

APPLICABLE STANDARDS:  
NPT Threads To ANSI B 1.20.1  
Inspection Per API 598

DIMENSIONS

unit:inch

SIZE	PORT	M	G	L	H	W	CV(GPM)	TORQUE(LBF-IN)	WEIGHT(LBS)	
DN8	1/4"	0.39	NPT	0.43	1.93	1.71	3.23	22	26.55	0.35
DN10	3/8"	0.49	NPT	0.43	1.93	1.71	3.23	24	26.55	0.35
DN15	1/2"	0.63	NPT	0.53	2.31	1.89	3.23	37	53.11	0.53
DN20	3/4"	0.79	NPT	0.63	2.70	2.25	4.02	68	70.81	0.84
DN25	1"	0.96	NPT	0.73	3.09	2.65	5.00	109	106.21	1.41
DN32	1-1/4"	1.26	NPT	0.75	3.67	2.90	5.00	185	141.62	2.16
DN40	1-1/2"	1.50	NPT	0.79	4.06	3.33	6.38	268	177.02	3.48
DN25	2"	1.97	NPT	0.95	4.84	3.64	6.38	486	221.28	5.86



	APPROVED BY.	CHECK BY.	DRAWN BY.	DRAWINGNO.	MATERIAL	UNIT	DESCRIPTION
SIGN	CHANG	PETER CHEN	Ann	WARREN-1022C	ASTM A351-CF8M	INCH	TWO PIECES BALL VALVES THREADED END, FULL BORE, 1000 WOG
DATE	07/06/2012	07/06/2012	07/06/2012	REVISION	01	SCALE	