

# Series 21C

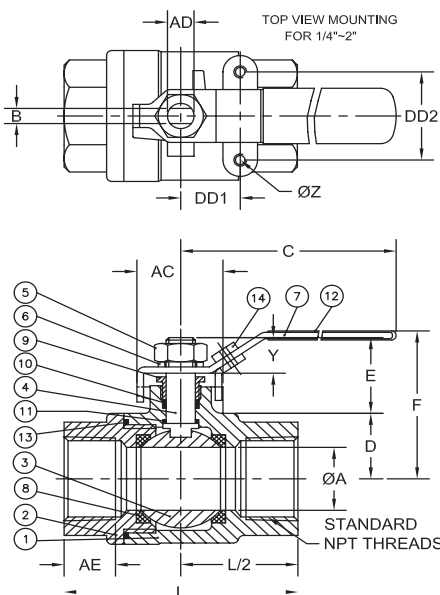
For general industrial and chemical applications

Investment cast Economical compact design Blowout Proof Stem Primarily for manual use

## Series 21C

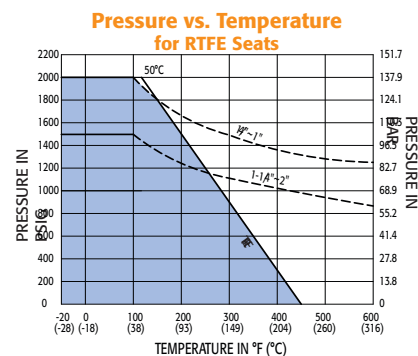


- Two piece design
- Available in carbon steel only
- Regular port 2000/1500 psi WOG (by size)
- Threaded ends only



### Series 21C

#### MATERIALS LIST



NO.	PART NAME	QTY	MATERIAL
1	BODY	1	ASTM A216 GRADE WCB
2	END CAP	1	ASTM A216 GRADE WCB
3	BALL	1	1/4" THRU 3/8" ASTM A276 SS316
3	BALL	1	1/2" THRU 2" ASTM A351 GRADE CF8M
4	STEM	1	ASTM A276 SS316
5	STEM NUT	1	AISI 304
6	*LOCK WASHER	1	AISI 304
7	HANDLE	1	AISI 304
8	SEAT	2	RTFE
9	GLAND NUT	1	AISI 304
10	V-RING PACKING	**	PTFE
11	THRUST WASHER	1	PTFE
12	HANDLE SLEEVE	1	VINYL
13	JOINT GAKSET	1	PTFE
14	HANDLE LOCK	1	AISI 304
16	HANDLE	1	AISI 304

\*Present on all valves except 1/4" and 3/8" models  
 \*\*Regular 1 pc stem packing is used for 1/4" and 3/8"; 1 set of V-Ring packing consists of 2 pcs. of V-Ring for 1/2" and 2" models

#### DIMENSIONS (IN)

SIZE	A	B	C	D	E	F	L	Y	Z	AC	AD	AE	DD1	DD2	LBS.
1/4"	0.37	0.197	4.16	0.59	0.71	1.99	2.01	0.29	10-24	1.03	0.31	0.38	0.51	1.12	0.48
3/8"	0.46	0.196	4.11	0.59	0.68	1.94	2.00	0.31	10-24	1.03	0.30	0.41	0.51	1.12	0.48
1/2"	0.49	0.194	4.02	0.60	0.84	2.13	2.37	0.36	10-24	1.03	0.30	0.50	0.51	1.12	0.62
3/4"	0.59	0.255	5.15	0.71	0.99	2.37	2.74	0.42	10-24	1.19	0.37	0.54	0.87	1.37	0.99
1"	0.79	0.256	5.29	0.86	0.97	2.19	3.29	0.46	10-24	1.18	0.37	0.71	0.86	1.37	1.46
1-1/4"	0.98	0.314	6.67	0.99	1.25	2.84	3.54	0.55	10-24	1.33	0.43	0.68	0.87	1.37	2.38
1-1/2"	1.26	0.313	6.64	1.23	1.18	2.53	4.11	0.56	1/4"-20	1.34	0.43	0.81	0.98	1.49	3.28
2"	1.50	0.381	7.51	1.56	1.20	3.43	4.63	0.60	1/4"-20	1.50	0.55	0.81	1.01	1.49	5.11