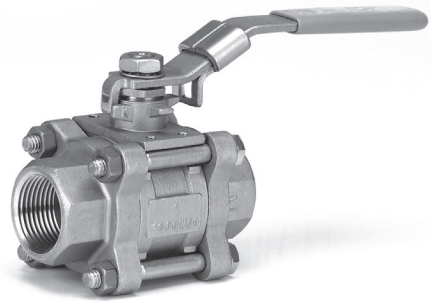


30 Series Ball Valve
Milwaukee Valve Company
30CC/CS/SS



3 Piece Full Port Ball Valve

Features and Benefits

- Locking lever for safety lockout
- Multiple V-ring stem packing arrangement for longer packing life
- Vent hold in ball slot for cavity venting
- Mounting pad for easy actuation
- TFE/Graphite Body Seal
- NACE Compliant for sour gas service
- Blow-out proof stem
- Cantilever seat design for low operating torque
- Meets ASME, MSS-SP and ASTM specifications

Operators Available

- Locking lever handle and ovals
- Pneumatic and Electric Actuation

Materials of Construction

- Body: WCB Carbon steel or CF8M Stainless Steel
- Ball: 316 Stainless
- Stem: 316 Stainless
- Seats: PTFE, RPTFE, Multi-Fil
- Packing: PTFE/Graphite
- Handles: Stainless Steel/Carbon Steel

Specifications and Product Range

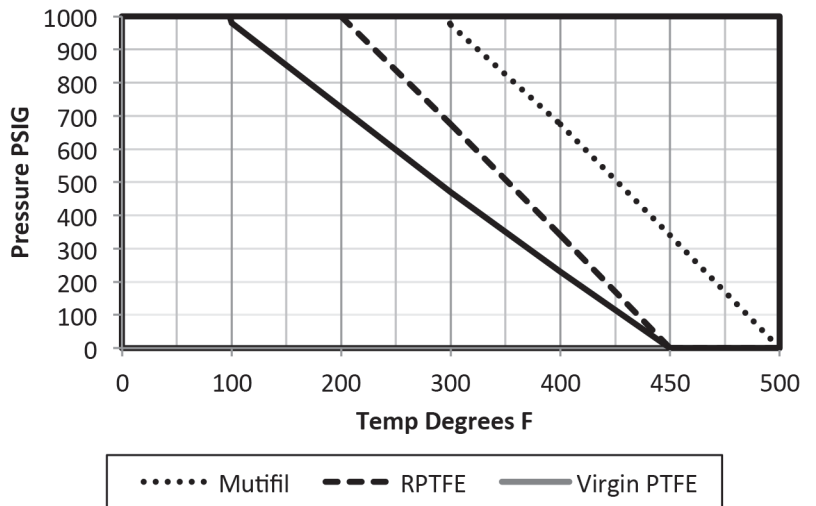
- Valve Sizes 1/4" through 2"
- Meets MSS-SP-110
- Valves meet NACE MRO175
- Socket Weld and NPT Connections

Pressure Ratings:	PSI
1/4" through 2"	1000

Valve is rated 150 psi steam @ 365°F with RPTFE seats

Torque & Cv Values

VALVE SIZE	MAXIMUM BREAKAWAY TORQUE (in lbs)	Cv(GPM)
1/4-3/8	30	9
1/2	50	10
3/4	70	31
1	125	49
1-1/4	210	85
1-1/2	360	110
2	600	360



How to Order Milwaukee Valve 30 Series Three Piece Ball Valve								
Series:	Body:	Ball/Stem Material:	End Connection Type:	Port Size:	Seat Material:	External Options:	Internal Options:	Size
30-Three Piece 1000 WOG	C = Carbon Steel (WCB) S = Stainless Steel (CF8M)	S = Stainless Steel (316) C = Carbons Steel Plated	0 = NPT Female 1 = Socket-Weld 6 = FNPT/Socket-Weld	F = Full Port	01 = Virgin PTFE 02 = Reinforced PTFE (15% Gls.) 03 = Multi-Fill PTFE (steam seat 250 psi)	LL = Stainless Latch-Lock Handle LS = Stainless Latch-Lock Handle-Spring-Loaded LO = Locking Stainless Oval Handle-Spring-Loaded OS = Stainless Oval Handle XH = Extended Handle (2") XLH = Extended Handle (4 1/2")	AD = Assembly Dry GB = Grounded Ball GS = Grounded Stem VB = Vented Ball	014 - 1/4" 038 - 3/8" 012 - 1/2" 034 - 3/4" 100 - 1" 110 - 1 1/4" 112 - 1 1/2" 200 - 2"

Example Product Numbers	
30CSOF-02-LL - 34 (3/4" Three Piece Full Port Carbon Steel Body, Stainless Trim, Female NPT End Pieces, RPTFE Seats, SS Latch-Lock Handle)	
30CSOF-02-LL-VB - 34 (3/4" Three Piece Full Port Carbon Steel Body, Stainless Trim, Female NPT End Pieces, RPTFE Seats, SS Latch-Lock Handle, Vented Ball)	

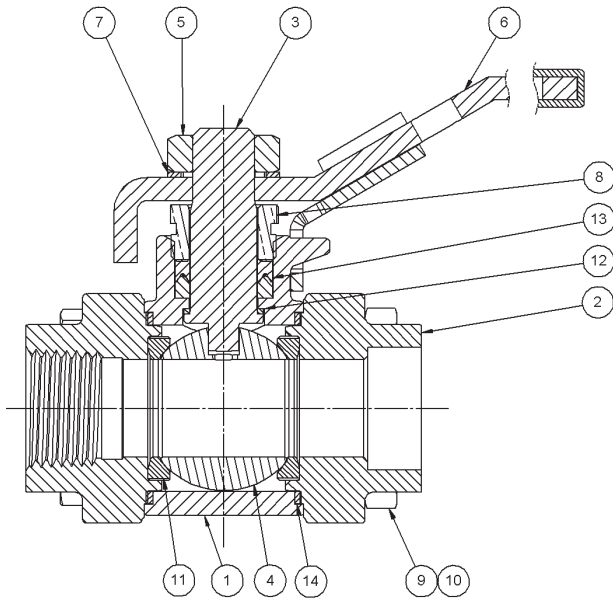
Teflon is a registered trademark of Dupont.

The information presented on this sheet is correct at the time of publication. Milwaukee Valve reserves the right to change design, and/or material specifications without notice. For the Installation, Operation and Maintenance Manual (IOM) see the engineering section on our website. For the most current information access www.milwaukeevalve.com

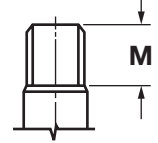
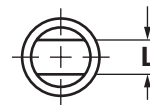
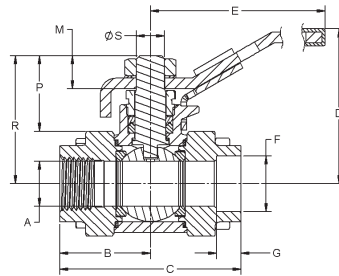
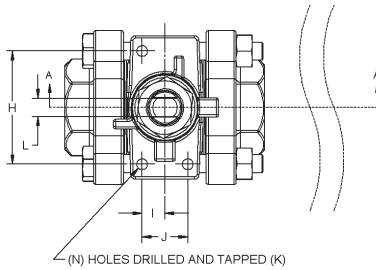
30CC/CS/SS

3-Piece Full Port Ball Valve

MATERIAL LIST



DESCRIPTION	30CCOF-02	30CSOF-02	30SSOF-02
1. Body	Carbon Steel ASTM A216, WCB	Carbon Steel ASTM A216, WCB	Stainless Steel ASTM A351/744, CF8M
2. Endcap	Carbon Steel ASTM A216, WCB	Carbon Steel ASTM A216, WCB	Stainless Steel ASTM A351/744, CF3M
3. Stem	Carbon Steel AISI - 12L14	Stainless Steel ASTM A276, Type 316	Stainless Steel ASTM A276, Type 316
4. Ball	Carbon Steel AISI -12L14	Stainless Steel ASTM A276, Type 316	Stainless Steel ASTM A276, Type 316
5. Handle Nut	Low Carbon Steel Zinc-Plated	Stainless Steel 18-8	Stainless Steel 18-8
6. Handle Assembly	AISI 1010 Steel Zinc-Plated	Stainless Steel 18-8	Stainless Steel 18-8
7. Lock Washer	Carbon Steel Plated	Stainless Steel Type 304	Stainless Steel Type 304
8. Packing Nut	Carbon Steel AISI - 12L14	Carbon Steel AISI - 12L14	Stainless Steel ASTM A276, Type 316
9. Body Capscrews	SAE J429 Gr.8 Zinc-Plated	SAE J429 Gr.8 Zinc-Plated	ASTM F593 Gr. C
10. Body Nuts	SAE J429 Gr.8 Zinc-Plated	SAE J429 Gr.8 Zinc-Plated	ASTM F593 Gr. C
11. Seats (02)	15% Glass-Filled, Reinforced PTFE	15% Glass-Filled, Reinforced PTFE	15% Glass-Filled Reinforced PTFE
12. Thrust Washer	PTFE	PTFE	PTFE
13. Packing	PTFE	PTFE	PTFE
14. Body Seal	PTFE (01) Graphoil (03)	PTFE (01) Graphoil (03)	PTFE (01) Graphoil (03)



DIMENSIONS

N = NUMBER OF ACTUATOR MOUNTING PADS HOLES

SIZE	1/4"		3/8"		1/2"		3/4"		1"		1-1/4"		1-1/2"		2"	
	IN	MM	IN	MM	IN	MM	IN	MM	IN	MM	IN	MM	IN	MM	IN	MM
A	.48	12.2	.50	12.7	.69	17.5	.75	19.1	1.00	25.4	1.25	31.8	1.50	38.1	2.00	50.8
B	1.28	32.5	1.28	32.5	1.40	35.6	1.72	43.7	1.94	49.3	2.38	60.5	2.62	66.5	3.05	77.5
C	2.56	65.0	2.56	65.0	2.81	71.4	3.44	87.4	3.87	98.3	4.75	121.0	5.24	133.0	6.10	154.9
D	1.83	46.5	1.83	46.5	2.52	64.0	2.79	70.9	2.93	74.4	3.18	80.8	3.37	85.6	3.60	91.4
E	3.88	98.6	3.88	98.6	5.88	149.0	5.88	149.0	5.88	149.0	7.75	197.0	7.75	197.0	7.75	197.0
F*	NA		NA		.86	21.97	1.08	27.31	1.34	34.04	1.69	42.8	1.93	48.9	2.42	61.37
G*	NA		NA		.50	12.7	.56	14.2	.68	17.3	.81	20.6	.87	22.1	1.06	26.9
H	1.12	28.4	1.12	28.4	1.58	40.1	1.58	40.1	1.58	40.1	1.46	37.1	1.63	41.4	2.25	57.2
I	—	—	—	—	.32	8.1	.32	8.1	.32	8.1	.56	14.2	.76	19.3	1.05	26.7
J	—	—	—	—	.64	16.3	.64	16.3	.64	16.3	1.13	28.7	1.53	38.9	2.10	53.3
K	10-24		10-24		10-24		10-24		10-24		1/4-20		1/4-20		1/4-20	
L	.197	5.0	.197	5.0	.276	7.0	.276	7.0	.276	7.0	.356	9.0	.356	9.0	.356	9.0
M	.33	8.4	.33	8.4	.51	13.1	.51	13.1	.51	13.1	.60	15.4	.605	15.4	.605	15.4
N	2		2		3		3		3		4		4		4	
P	.945	24.0	.945	24.0	1.25	31.75	1.25	31.75	1.25	31.75	1.375	34.93	1.50	38.10	1.50	38.10
R	1.63	41.33	1.63	41.40	1.97	50.04	2.30	58.37	2.47	62.79	2.90	73.74	3.14	79.73	3.57	90.63
S	.31	7.87	.31	7.90	.44	11.07	.44	11.07	.44	11.07	.56	14.25	.56	14.25	.56	14.25
WT.	LBS	KILOS	LBS	KILOS	LBS	KILOS	LBS	KILOS	LBS	KILOS	LBS	KILOS	LBS	KILOS	LBS	KILOS
	—	—	—	—	1.53	3.37	2.51	5.52	3.27	7.19	5.24	11.53	7.32	16.10	11.91	26.20

* These dimensions apply only to socket-weld end valves.

The information presented on this sheet is correct at the time of publication. Milwaukee Valve reserves the right to change design, and/or material specifications without notice. For the Installation, Operation and Maintenance Manual (IOM) see the engineering section on our website. For the most current information access www.milwaukeevalve.com