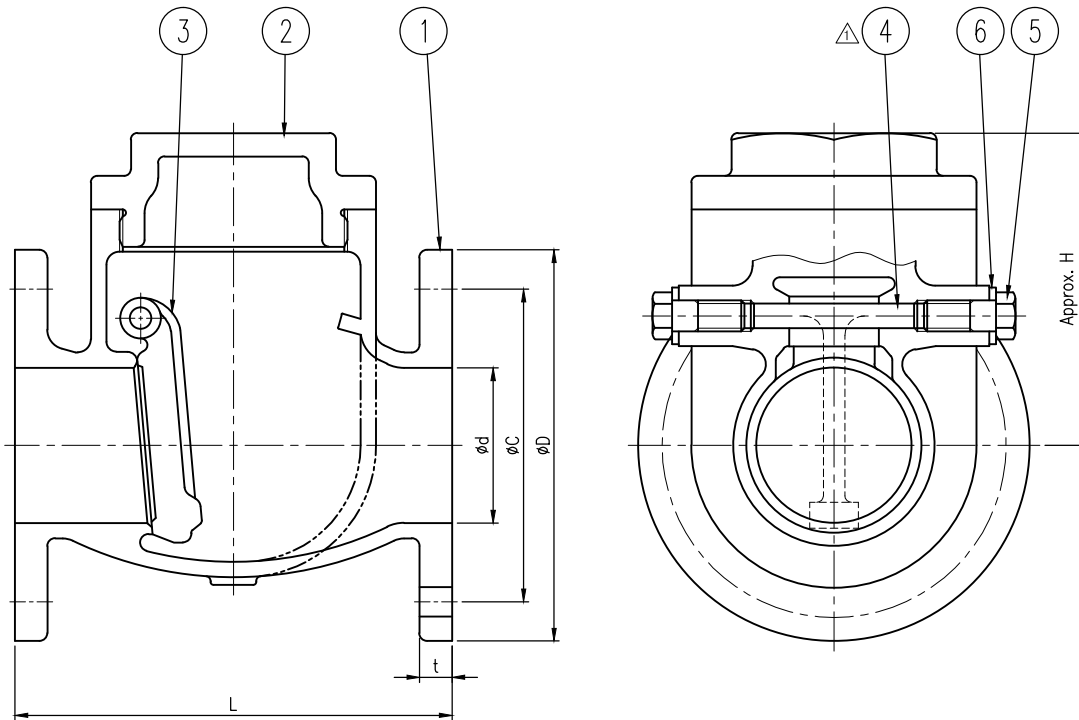


TEST PRESSURE

HYDRAULIC TEST		kgf/cm ²	psi
	SHELL	24.6	350
	SEAT	15.8	225



[Unit : mm]

NPS	BORE ød	FLANGE ASME 150lbs FF					L	H
		øD	øC	t	n	øh		
½"	12.7	90	60.3	7.9	4	16	108	55
¾"	19.1	100	69.9	8.6	4	16	117	55
1"	25.4	110	79.4	9.7	4	16	127	60
1-¼"	31.8	115	88.9	10.4	4	16	140	70
1-½"	38.1	125	98.4	11.2	4	16	165	80
2"	50.8	150	120.7	12.7	4	19	203	100

NOTES

- * Applicable Standard
- △ 1. Face to Face : ASME B16.10
- 2. Flange Dimension : ASME B16.24
- 3. Inspection & Test : API 598
- △ 4. Country of Origin : Korea

6	GASKET	PTFE	
5	PLUG	B124-C37700	
4	HINGE PIN	B150-C83000	
3	DISC	B62-C83600	
2	CAP	B62-C83600	
1	BODY	B62-C83600	

NO.	PART NAME	MATERIAL	REMARKS		
△	-	-			
△	-	-			
△	2019.07.25	Material changed	J.S.LIM H.Y.JUNG S.H.AHN		
REV. NO.	DATE	DESCRIPTION	DRW'D BY	CHK'D BY	APP'D BY

TITLE		CAST BRONZE SWING CHECK VALVE				
RATING	Class 150	SIZE	See table	UNIT	mm	
DRW'D BY	CHK'D BY	APP'D BY	DATE	2019.05.30	SCALE	N/S
J.S.LIM	H.Y.JUNG	S.H.AHN	TYPE	Screwed Bonnet		
			DWG. NO.	SWV-BC-150P-0.5~3B		

W₃ SPACE	
SPACE FIG NO.	15055-B