

BRONZE GLOBE & ANGLE 150 LB FLGD

BOLTED BONNET

SIZES: 1-1/2" to 12"

DESIGN DESCRIPTION

Rising Stem
Bronze Trim
Monel Trim and Stop-check available

PARTS AND MATERIAL LIST:

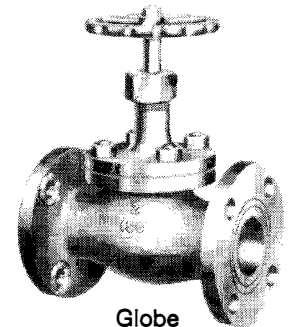
PART	MATERIAL	SPECIFICATION
Body	bronze	B-62
Bonnet	bronze	B-62
Bonnet gasket	non-asbestos	commercial
Disc*	bronze	B-62
Disc nut	bronze	B-62
Stem*	bronze	B-124
Packing	non-asbestos	commercial
Packing gland	brass	B-16
Packing nut	bronze	B-62
Seat ring*	bronze	B-62

*available in Monel

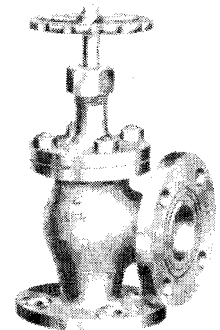
PRESSURE / TEMPERATURE RATINGS

150 psi wsp
225 psi wog

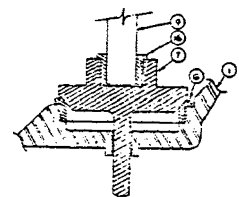
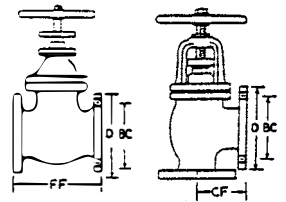
500° F
150° F



Globe
052303 Bronze Trim
052304 Monel Trim



Angle
052403 Bronze Trim
052404 Monel Trim



Stop Check Detail